



## 99% HPLC Citalopram Hydrobromide Lyophilized Powder For Treating Depression

Our Product Introduction

### Basic Information

- Place of Origin: China
- Brand Name: Hongbaiyi
- Certification: HPLC, UV
- Model Number: HBY-Citalopram Hydrobromide
- Minimum Order Quantity: 1kg
- Price: Negotiable
- Packaging Details: 1kg/bag, 25kg/drum
- Delivery Time: 3~5 days, upon receipt of payment
- Payment Terms: T/T, Western Union, MoneyGram
- Supply Ability: 4000kg/month



Citalopram Hydrobromide

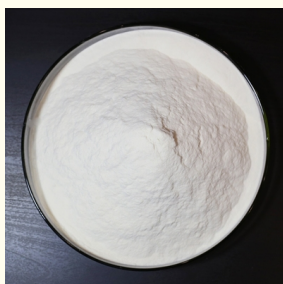


### Product Specification

- Product Name: Tianeptine Sodium Online
- Formula:  $C_{21}H_{24}ClN_2O_4S$
- Mol Weight: 405.31
- Purity:  $\geq 99\%$  (HPLC)
- CAS Number: 59729-32-7
- Appearance: White Lyophilized Powder
- Highlight: **Citalopram Hydrobromide Powder, Treating Depression Citalopram Hydrobromide, Citalopram Hbr CAS 59729-32-7**



### More Images



for more products please visit us on [peptide-powder.com](http://peptide-powder.com)

## Product Description

### 99% (HPLC) Citalopram Hydrobromide Lyophilized Powder For Treating Depression

Citalopram is a prescription medicine used in adults to treat depression.

Citalopram is also used to treat \_major depressive disorder (MDD).

Citalopram belongs to a class of antidepressants called selective serotonin reuptake inhibitors (SSRIs). It works by increasing the amount of serotonin, a natural substance in the brain that helps maintain mental balance.

Product Name	Citalopram Hydrobromide powder
CAS Number	59729-32-7
Assay	>99% (HPLC)
MF	C <sub>21</sub> H <sub>24</sub> CIN <sub>2</sub> O <sub>4</sub> S
Appearance	White Lyophilized powder
MW	405.31

### Citalopram Side Effects

Citalopram is a medication used to treat depression and anxiety. It is important to be aware of the possible side effects of citalopram before taking it.

### Serious Side Effects

Seek immediate medical attention if you experience any signs of an allergic reaction to citalopram, such as hives, difficulty breathing, or swelling of your face, lips, tongue, or throat.

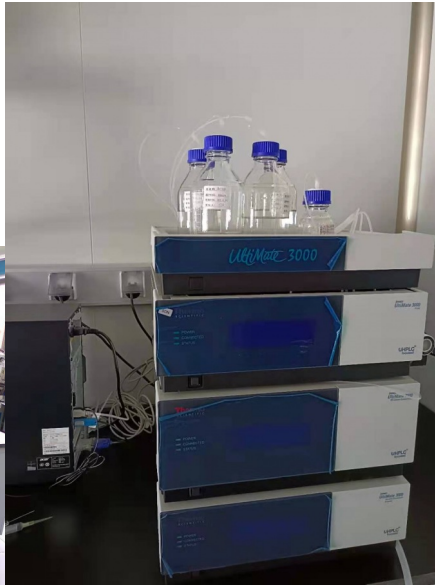
### Shipping and Packages:

Shipping time: 3~5 days, upon receipt of payment

Packing method: 1kg/bag, 25kg/drum



### Laboratory equipment



#### FAQ

Q1: Do you Accept Sample Order?

A: Yes. The smallest order we accept is 1kg.

Q2: How long does it take to me if I order?

A: About 3-5 days upon receipt of payment.

Q3: Do you accept VISA business credit card?

A: Yes. VISA business credit card is in our payment.

Q4: Is there any discount?

A: Yes, if you want to purchase larger quantity, we can offer a better price for you.

Q5: What kind of transportation do you have?

A: We have many ways of transportations, eg: Air, Sea, Special Lines, TNT, FEDEX, EMS, ect.



**Shaanxi Hongbaiyi Biotech Co., Ltd.**

☎ 18192109180

✉ [tracy@sxhongbaiyi.com](mailto:tracy@sxhongbaiyi.com)

🌐 [peptide-powder.com](http://peptide-powder.com)

Hengjia Business Building, No.115 Weiyang Road, E&T Development Zone, Xi'an, Shaanxi, China.